

Smooth Type on Windows Systems

In conducting our ongoing research and development with regards to pLink for Windows, we discovered that the default display settings for Windows XP (and possibly other versions) do not use ClearType font smoothing. When ClearType is turned on, Datacon screens can look much better.

To turn on ClearType font smoothing:

- Go to display options (right click the Desktop and choose “Properties”)
- Click the Appearance tab.
- Click on the Effects button.
- Change the Screen Font Smoothing method to ClearType.
- See *Figure 1: Turn on ClearType Font Smoothing*

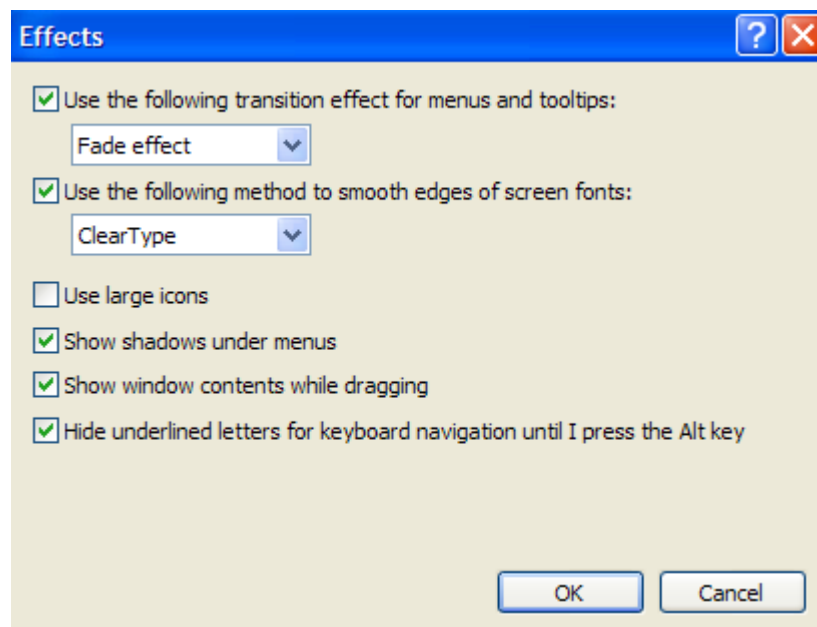


Figure 1: Turn on ClearType Font Smoothing

Questions? Contact the staff at Datacon for help.
www.datacondental.com
Phone: (800) 773-7878
Email: info@datacondental.com